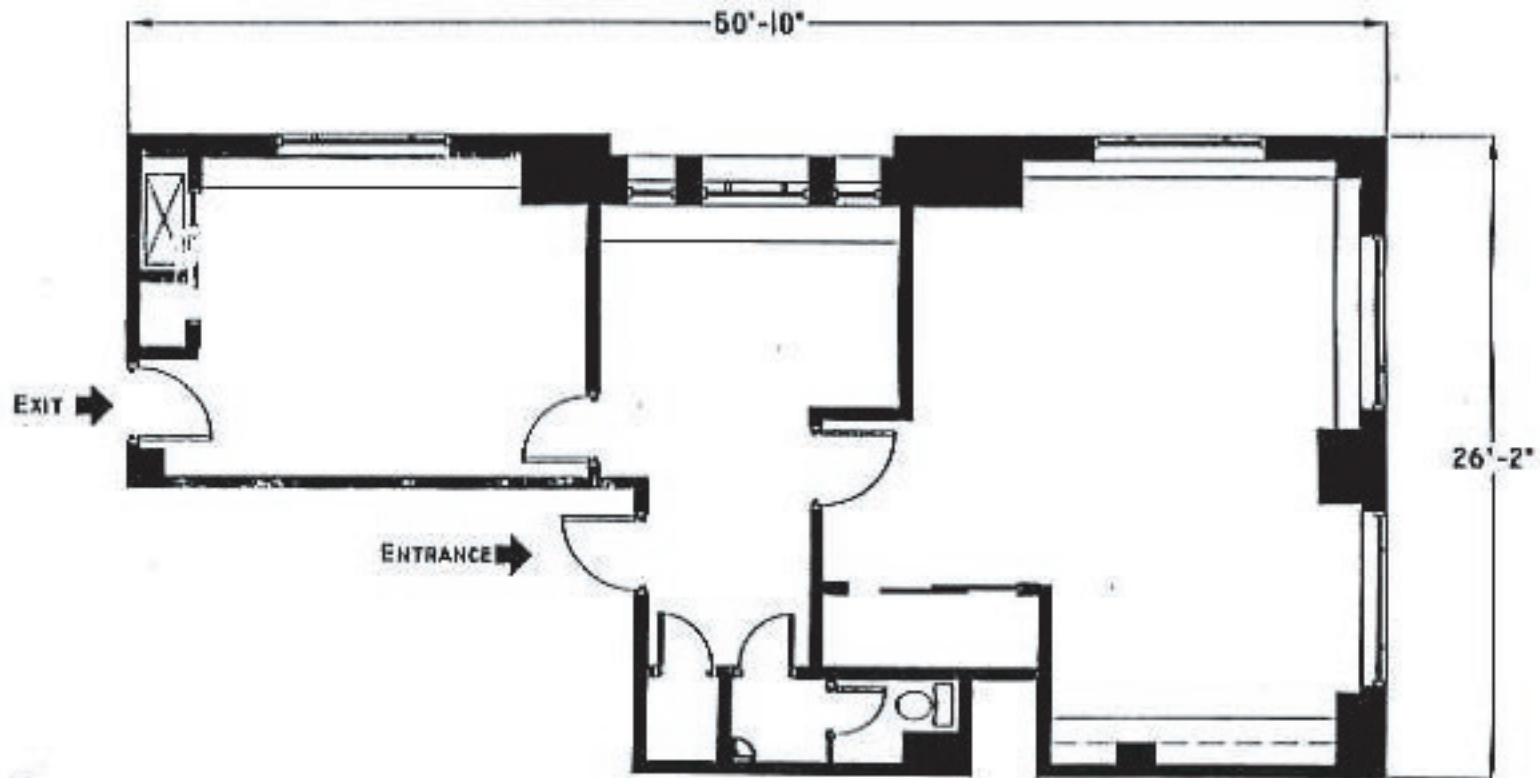


BANK OF AMERICA BUILDING
200 East State
Ithaca, New York



SECOND FLOOR, SUITE 202
1,328 RENTABLE SQUARE FEET
APPROXIMATE SCALE: 1/8" = 1'-0"
APPROXIMATE CEILING HEIGHT: 8'-5"

ALL DIMENSIONS APPROXIMATE. ERRORS AND OMISSIONS EXCEPTED.

RENTAL OFFICE
607-273-3200

